

Hotel im Schulhaus

Schwalbacher Straße 41
65391 Lorch/ Rheingau

Tel: +49 6726 80 71 6-0

info@hotel-im-schulhaus.com
www.hotel-im-schulhaus.com

Information for people with walking difficulties and wheelchair users

Information on accessibility was evaluated and verified on November 12, 2025 as part of the quality criteria / system "Tourism for all".

Images of the building/object



Hotel im Schulhaus

©Hotel im Schulhaus

Parking

Parking lot



Parkplatz

©Gisela Moser

There is a general parking lot available.

There is at least one parking space for people with disabilities.

There is/are 1 parking space(s) for people with disabilities.

Parking space width: 350 cm

Parking space length: 500 cm

The surface quality of the car park is vibration-free and is easy to walk and drive on (e.g. asphalt, narrow-jointed slabs, etc.).

Distance from the parking space(s) for people with disabilities to the entrance area: 8 m

The parking space(s) for people with disabilities is/are marked.

Additional information only available in German: Area outside the markings usable at least 350 cm x 500 cm

Path from the parking lot to the entrance



Weg außen

©Gisela Moser

Width of the path: 500 cm

Length of the path: 8 m

The surface of the path is low in vibrations and easy to walk on (e.g. asphalt, narrow-jointed slabs, etc.).

Maximum longitudinal gradient of the path: 0 %

Entrance

Entrance area



Eingangsbereich

©Gisela Moser

The entrance door

Clear width of the passageway: 167 cm

Type of door: double leaf

The door is opened without using any force (lever handle, light barrier sensor, motion detector, etc.).

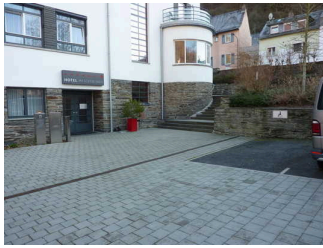
The WIDTH of the smaller manoeuvring area in front of / behind the door: 160 cm

The DEPTH of the smaller manoeuvring area in front of / behind the door: 250 cm

The threshold height: 0 cm

Additional information only available in German: Am Eingang vom Parkplatz kommend befindet sich der Schlüsselsafe und eine Klingel.

Path from the parking lot to the entrance



Weg außen

©Gisela Moser

Width of the path: 500 cm

Length of the path: 8 m

The surface of the path is low in vibrations and easy to walk on (e.g. asphalt, narrow-jointed slabs, etc.).

Maximum longitudinal gradient of the path: 0 %

Reception

Reception



Schalter/Tresen/
Kasse

©Gisela Moser

The WIDTH of the manoeuvring space in front of the counter: 250 cm

The DEPTH of the manoeuvring space in front of the counter: 150 cm

The counter / cash desk is at its highest point 114 cm high.

The counter / cash desk is at its lowest point 114 cm high.

There is another, equivalent communication possibility while in a sitting position.

Entrance hall with reception (1st floor)



Eingangsraum mit
Rezeption

©Gisela Moser

Door to the room

Clear width of the passageway: 100 cm

Type of door: double leaf

The WIDTH of the smaller manoeuvring area in front of / behind the door: 250 cm

The DEPTH of the smaller manoeuvring area in front of / behind the door: 250 cm

The threshold height: 0 cm

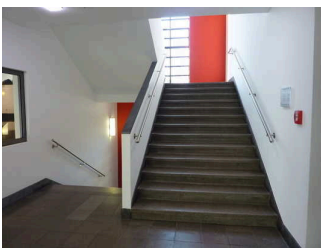
The WIDTH of the room: 500 m

The DEPTH of the room: 300 m

The width of the narrowest passageway in the room: 200 cm

There is seating available.

Stairs from the ground floor (entrance) to the first floor (reception)



Treppe vom EG
(Eingang) zum 1. OG
(Rezeption)

©Gisela Moser

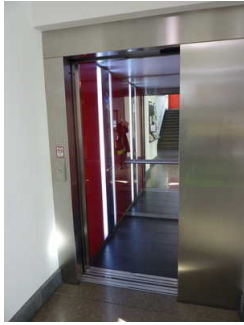
Existing thresholds/steps: 18

The height of the thresholds/steps: 15 cm

The stairs are straight.

The staircase has handrails on both sides.

Lift from the ground floor (entrance) to the first floor (reception)



Aufzug vom EG
(Eingang) zum 1. OG
(Rezeption)

©Gisela Moser



Aufzug vom EG
(Eingang) zum 1. OG
(Rezeption)

©Gisela Moser

The WIDTH of the manoeuvring space in front of the elevator when entering: 170 cm

The DEPTH of the manoeuvring space in front of the elevator when entering: 250 cm

Clear passage width of the elevator door: 90 cm

The WIDTH of the cabin inside: 105 cm

The DEPTH of the cabin inside: 138 cm

The WIDTH of the manoeuvring space in front of the elevator when exiting: 170 cm

The DEPTH of the manoeuvring space in front of the elevator when exiting: 250 cm

There is no horizontal control panel.

The control elements/control units are arranged as follows:

The HIGHEST position of the controls: 105 cm

The LOWEST position of the controls: 90 cm

The horizontal distance from the corner of the cabin to the first control element (central) is 70 cm.

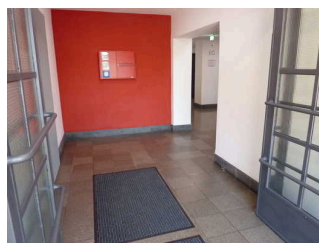
Corridor/way/aisle inside

Corridor/way/aisle inside



Weg vom Eingang
vom Parkplatz zur
Treppe / Aufzug

©Gisela Moser



Weg vom Eingang
vom Parkplatz zur
Treppe / Aufzug

©Gisela Moser

Length of the corridor/way/aisle: 5 m

Minimum width of the corridor/way/aisle: 190 cm

The width of the path/corridor is not restricted.

Corridor/way/aisle inside



Weg von Treppe /
Aufzug zur Rezeption
(1. OG)

©Gisela Moser

Length of the corridor/way/aisle: 5 m

Minimum width of the corridor/way/aisle: 200 cm

Existing passageways are at least 88 cm wide.

Room with sanitary facilities 1

Bedroom 001



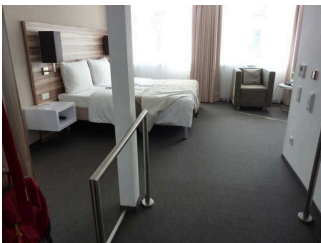
Zimmer 001 (EG)

©Gisela Moser



Zimmer 001 (EG)

©Gisela Moser



Zimmer 001 (EG)

©Gisela Moser



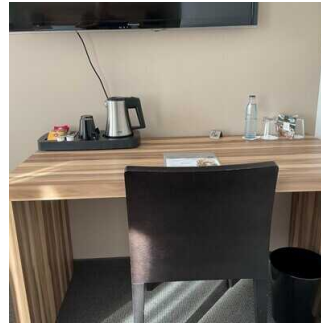
Bedroom

©Maren Gutberlet



Bedroom

©Maren Gutberlet



Bedroom

©Maren Gutberlet

Door to the bedroom

Clear width of the passageway: 91 cm

Type of door: single leaf

The door is opened without using any force (lever handle, light barrier sensor, motion detector, etc.).

The WIDTH of the smaller manoeuvring area in front of / behind the door: 155 cm

The DEPTH of the smaller manoeuvring area in front of / behind the door: 250 cm

The threshold height: 0 cm

Room type: Double room

The WIDTH of the manoeuvring space in front of essential stationary furnishings (e.g. wardrobe): 150 cm

The DEPTH of the manoeuvring space in front of essential stationary furnishings (e.g. wardrobe): 200 cm

The width of the narrowest passageway in the bedroom: 120 cm

The WIDTH of the manoeuvring space left of the bed: 140 cm

The DEPTH of the manoeuvring space left of the bed: 160 cm

The WIDTH of the manoeuvring space right of the bed: 80 cm

The DEPTH of the manoeuvring space right of the bed: 160 cm

The bed can be driven under on one longitudinal side in its entire depth.

There is a clearance of 21 cm under the bed for mobile hoist access.

Maximum height of the bed: 60 cm

Width of the bed: 180 cm

Additional information only available in German: to question 107.305: the bed can also be adjusted to a height of 50 cm. Please express your wish in advance. To 107.308: These are two single beds that can be pulled apart or removed individually.

Bathroom in room 001



Bad im Zimmer 001

©Gisela Moser



Bad im Zimmer 001

©Gisela Moser



Bad im Zimmer 001

©Gisela Moser

Door to the bathroom

Clear width of the passageway: 106 cm

Type of door: single leaf

The door is opened requiring the users own effort.

The WIDTH of the smaller manoeuvring area in front of / behind the door: 147 cm

The DEPTH of the smaller manoeuvring area in front of / behind the door: 290 cm

The threshold height: 0 cm

The door opens outwards.

Toilet

The depth of the toilet bowl: 70 cm

The WIDTH of the manoeuvring space left of the toilet: 14 cm

The DEPTH of the manoeuvring space left of the toilet: 70 cm

The WIDTH of the manoeuvring space right of the toilet: 114 cm

The DEPTH of the manoeuvring space right of the toilet: 70 cm

The WIDTH of the manoeuvring space in front of the toilet: 290 cm

The DEPTH of the manoeuvring space in front of the toilet: 175 cm

The height of the toilet seat: 49 cm

There is a grab rail on the left side of the toilet.

The height of the left grab rail: 78 cm

The length of the left grab rail: 85 cm

The grab rail on the left of the toilet can be flipped-up.

There is a grab rail on the right side of the toilet.

The height of the right grab rail: 78 cm

The length of the right grab rail: 85 cm

The grab rail on the right of the toilet can be flipped-up.

There are grab rails available on the right and left of the toilet.

The distance between the left and right grab rail is 68 cm.

Washbasin/sink

The WIDTH of the manoeuvring space in front of the sink: 290 cm

The DEPTH of the manoeuvring space in front of the sink: 135 cm

The height of the sink (front upper edge): 80 cm

The sink is wheelchair compatible at a height of 67 cm and a depth of at least of 30 cm.

The mirror can be seen while standing or sitting.

Shower

The height difference between the upper edge of the shower area/shower tray and the adjoining floor area: 0 cm

The WIDTH of the manoeuvring space in the shower: 135 cm

The DEPTH of the manoeuvring space in the shower: 290 cm

A shower seat is available or can be provided if required (fixed installation, foldable, suspended or portable and sturdy).

There are grab rails available in the shower.

The grab rails are mounted horizontally.

The height of the horizontally mounted grab rails: 75 cm

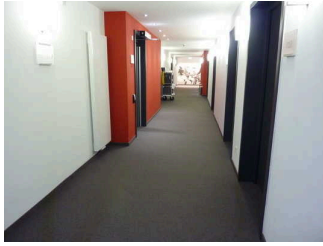
The height of the shower armature: 90 cm

An alarm trigger (cord, button) is available.

Cord as an alarm trigger is available.

The height of the alarm trigger from the floor: 10 cm

Path from the stairwell to room 001 (ground floor)



Weg vom
Treppenhaus zum
Zimmer 001 (EG)

©Gisela Moser

Length of the corridor/way/aisle: 5 m

Minimum width of the corridor/way/aisle: 190 cm

Existing passageways are at least 88 cm wide.

Dining room / Restaurant

Dining area

Breakfast room (ground floor)



Frühstücksraum (EG)

©Gisela Moser



Frühstücksraum (EG)

©Gisela Moser



Frühstücksraum (EG)

©Gisela Moser

Door to the dining room

Clear width of the passageway: 100 cm

Type of door: double leaf

The door is opened requiring the users own effort.

The WIDTH of the smaller manoeuvring area in front of / behind the door: 205 cm

The DEPTH of the smaller manoeuvring area in front of / behind the door: 205 cm

The threshold height: 0 cm

Additional information only available in German: Re 206.103: The door has two leaves, then 180 cm wide.

The width of the narrowest passageway in the room: 147 cm

There are wheelchair accessible tables (maximum height 80 cm, wheelchair accessible at a height of 67 cm and a depth of 30 cm) available.

Quantity: approx. 34 table/tables

Terrace by the breakfast room (ground floor)



Terrasse am
Frühstücksraum (EG)

©Gisela Moser



Terrasse am
Frühstücksraum (EG)

©Gisela Moser

Door to the dining room

Clear width of the passageway: 89 cm

Type of door: single leaf

The door is opened requiring the users own effort.

The WIDTH of the smaller manoeuvring area in front of / behind the door: 200 cm

The DEPTH of the smaller manoeuvring area in front of / behind the door: 200 cm

The threshold height: 0 cm

Additional information only available in German: Re 206.103: the entire window front can be opened, creating a passageway several metres wide.

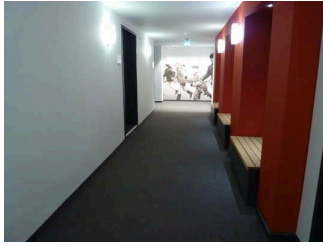
The width of the narrowest passageway in the room: 500 cm

There are wheelchair accessible tables (maximum height 80 cm, wheelchair accessible at a height of 67 cm and a depth of 30 cm) available.

Quantity: approx. 4 table/tables

Additional information only available in German: Re 106.401 and 403: additional tables are placed outside during the summer.

Corridor from the staircase to the breakfast room (ground floor)



Flur vom Treppenhaus
zum Frühstücksraum
(EG)

©Gisela Moser

Length of the corridor/way/aisle: 15 m

Minimum width of the corridor/way/aisle: 190 cm

The width of the path/corridor is not restricted.

Public toilet

Public toilet (1st floor)



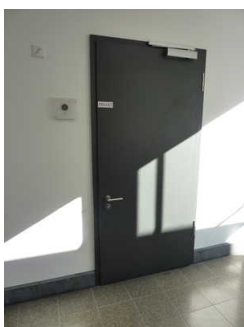
Öffentliches WC
(1.OG)

©Gisela Moser



Öffentliches WC
(1.OG)

©Gisela Moser



Öffentliches WC
(1.OG)

©Gisela Moser

Door to public toilet

Clear width of the passageway: 93 cm

Type of door: single leaf

The door is opened requiring the users own effort.

The WIDTH of the smaller manoeuvring area in front of / behind the door: 180 cm

The DEPTH of the smaller manoeuvring area in front of / behind the door: 175 cm

The threshold height: 0 cm

The door opens outwards.

The toilet door can be opened without a key.

Toilet/WC

There is a uni-sex toilet.

There is a toilet available for people with disabilities.

The depth of the toilet bowl: 70 cm

The WIDTH of the manoeuvring space left of the toilet: 96 cm

The DEPTH of the manoeuvring space left of the toilet: 70 cm

The WIDTH of the manoeuvring space right of the toilet: 97 cm

The DEPTH of the manoeuvring space right of the toilet: 70 cm

The WIDTH of the manoeuvring space in front of the toilet: 175 cm

The DEPTH of the manoeuvring space in front of the toilet: 180 cm

The height of the toilet seat: 47 cm

There is a grab rail on the left side of the toilet.

The height of the left grab rail: 78 cm

The length of the left grab rail: 85 cm

The grab rail on the left of the toilet can be flipped-up.

There is a grab rail on the right side of the toilet.

The height of the right grab rail: 78 cm

The length of the right grab rail: 85 cm

The grab rail on the right of the toilet can be flipped-up.

There are grab rails available on the right and left of the toilet.

The distance between the left and right grab rail is 67 cm.

Washbasin/sink

The WIDTH of the manoeuvring space in front of the sink: 180 cm

The DEPTH of the manoeuvring space in front of the sink: 175 cm

The height of the sink (front upper edge): 79 cm

The sink is wheelchair compatible at a height of 67 cm and a depth of at least of 30 cm.

The mirror can be seen while sitting.

Aids

Alarm/Aids

Assistance dogs (companion dogs, guide dogs etc.) are allowed in all relevant areas/rooms of the establishment/offer.

Aids are offered.

Reading aids (reading glasses, magnifying glasses, etc.),

Other aids offered: Umfangreiche Informationen rund um das Thema "Barrierefreiheit" (Angebote im Hotel und in der Umgebung)

Additional information only available in German: Assistance dogs are not permitted in the accessible room.